



HOLLY PRICE POWERED BY **exp**<sup>TM</sup> UK



@ holly.price@exp.uk.com

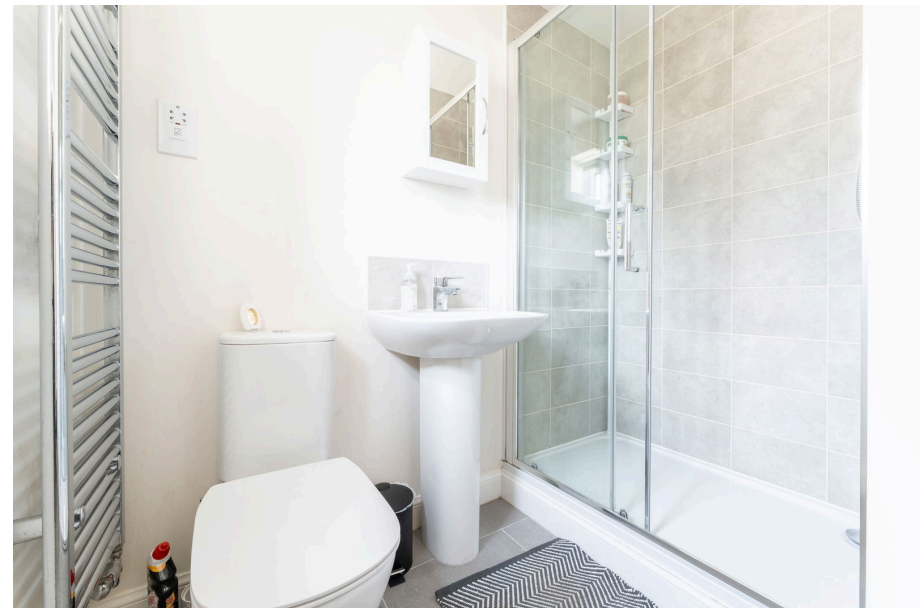
hollyprice.exp.uk.com

01904 373131



**19 Waterside Court,**  
**Offers Over £190,000**

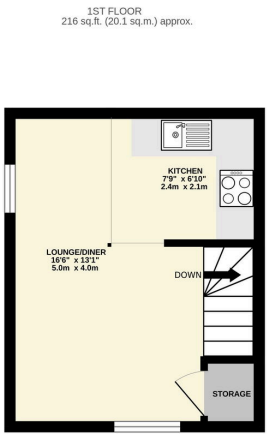
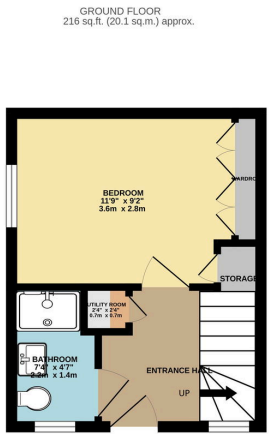
 1  1  1





- No Onward Chain
- One Bedroom Semi Detached Home
- First Floor Open Plan Living/ Kitchen
- Built in 2020 - Approx. 6 Years NHBC Left
- Check Out The Video Tour!
- Private Enclosed Garden
- Allocated Parking Space
- Utility Cupboard & Modern Shower Room
- Ready To Put Your Stamp On





TOTAL FLOOR AREA: 433 sq.ft. (40.2 sq.m.) approx.  
Whilst every attempt has been made to ensure the accuracy of the floorplan contained herein, measurements of doors, windows, rooms and any other items are approximate and no responsibility is taken for any error, omission or mis-statement. This plan is for illustrative purposes only and should be used as such by any prospective purchaser. The services, systems and appliances shown have not been tested and no guarantee as to their operability or efficiency can be given.  
Made with Homestyler ©2024

Just 4 miles from the city centre, this one bedroom semi detached home is surrounded by riverside walks and green open spaces. The property has all the essentials to first time buyer living; being extremely close to York, an enclosed own private garden, allocated parking and open plan living. With no onward chain, this is a must see. Welcome to Waterside Court.

Score	Energy rating	Current	Potential
92+	A		99 A
81-91	B	82 B	
69-80	C		
55-68	D		
39-54	E		
21-38	F		
1-20	G		